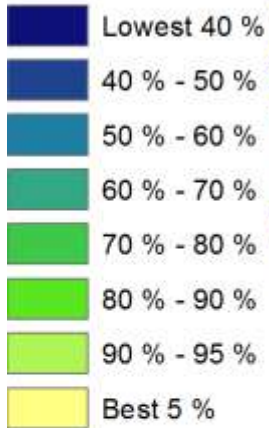


# Case Zonation and forest biodiversity

Coordinator Ninni Mikkonen  
Finnish Environment Institute SYKE  
13.6.2018 ECCB Jyväskylä

### Prioritization



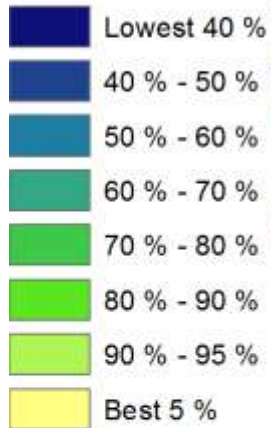
100 km



## Outline

1.  **ZONATION**  
Conservation planning software
2. Forest biodiversity prioritizations
3. Earth observation data

### Prioritization



100 km



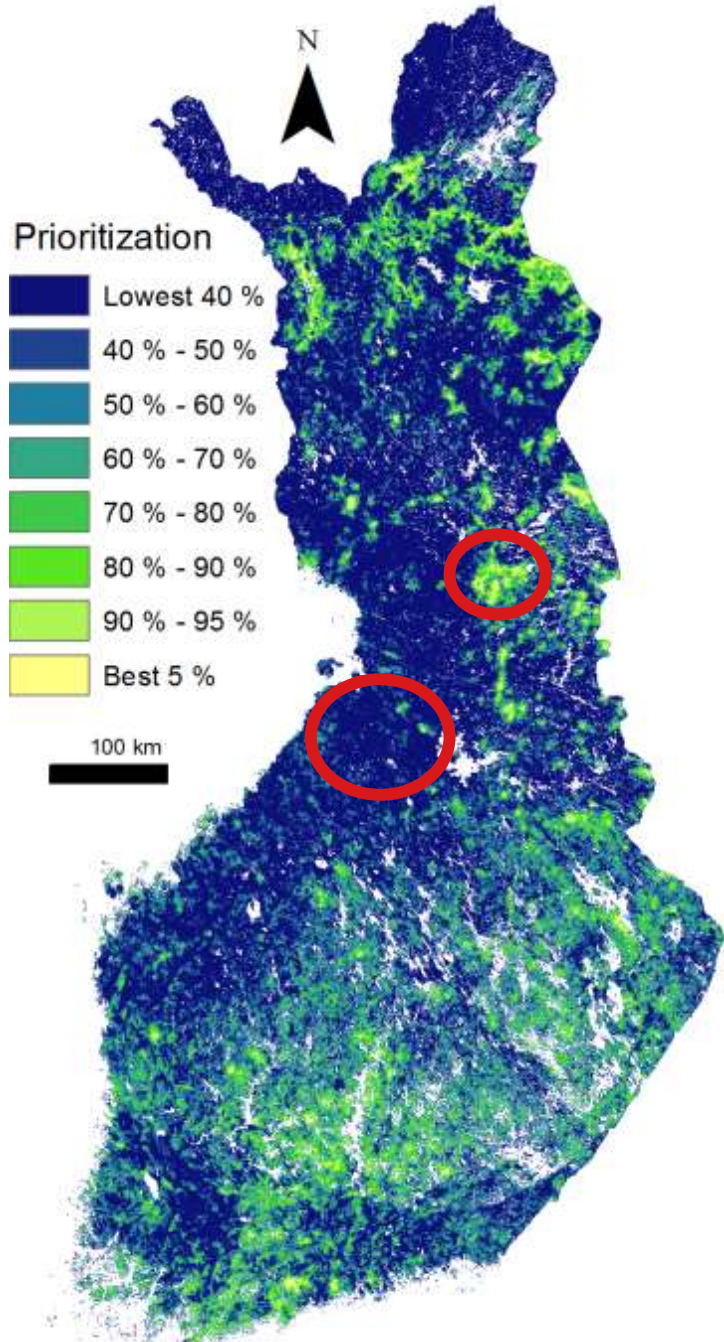
Uses mainly spatial raster data of biodiversity

- Species, ecosystems, ESS  
+ costs, threats, connectivity...

Based on complementarity

Creates balanced result

.. Which usual look like this



With Z we can recognize

1. Most valuable forests for biodiversity
  1. If not protected – Hurry up!
2. Least valuable forests for biodiversity
3. Conservation network expansion
4. Conservation network assesment



SYKE

Finnish Environment Institute



Centre of Economic Development, Transport  
and the Environment



Ympäristöministeriö  
Miljöministeriet  
Ministry of the Environment



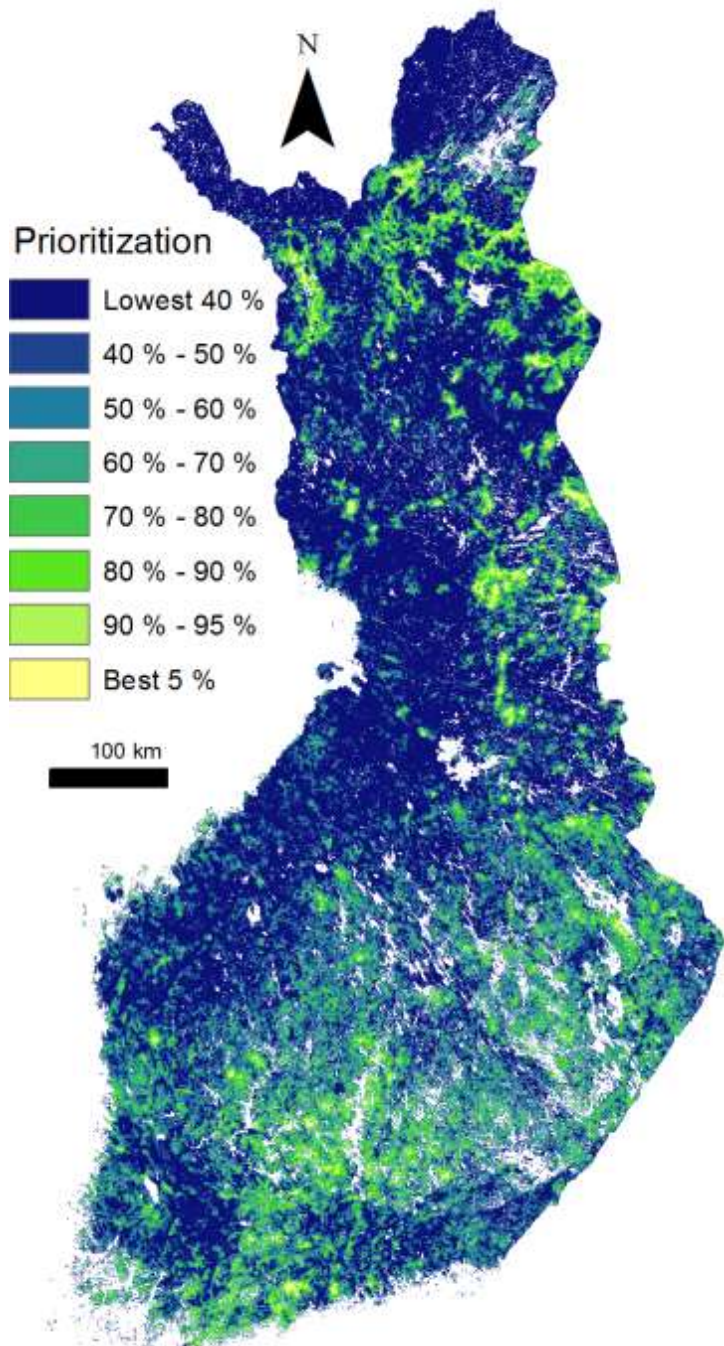
metsäkeskus

Finnish Forest Centre



METSÄHALLITUS

Parks and Wildlife



## Forest biodiversity analysis setup

1. Local value (modelled decaying wood potential)\*
  2. Penalties\*
  3. Unfragmentation (connectivity)
  4. IUCN Red List forest species
  5. Connectivity to forests protected by Finnish Forest Act
  6. Connectivity to permanent forest conservation areas
- \*includes EO data



Tree stand level data on the ground  
Fertility, tree species, diameter, volume, layers



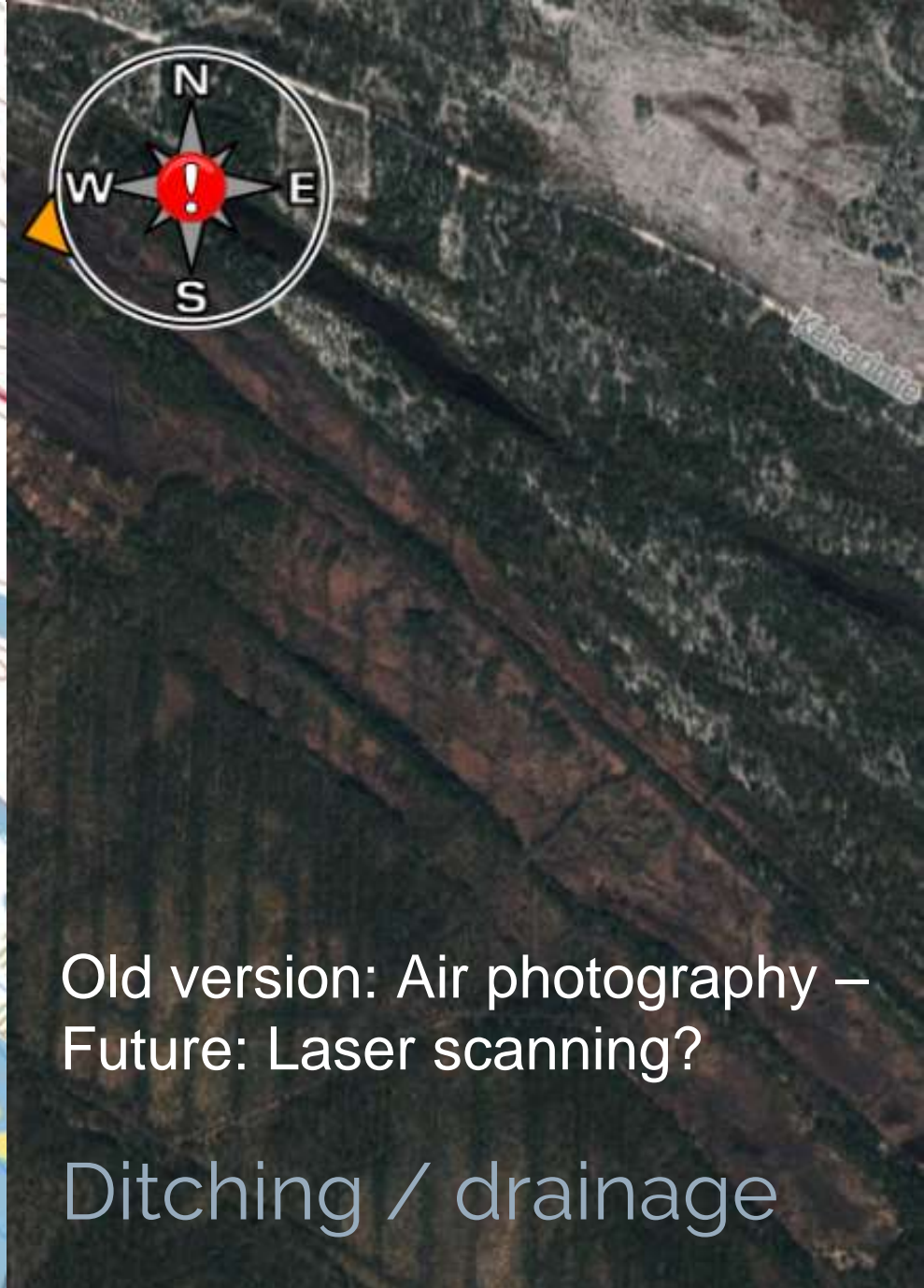


~~Fertility, tree species, diameter, volume, layers~~

Help from the  
new dense  
laser data!

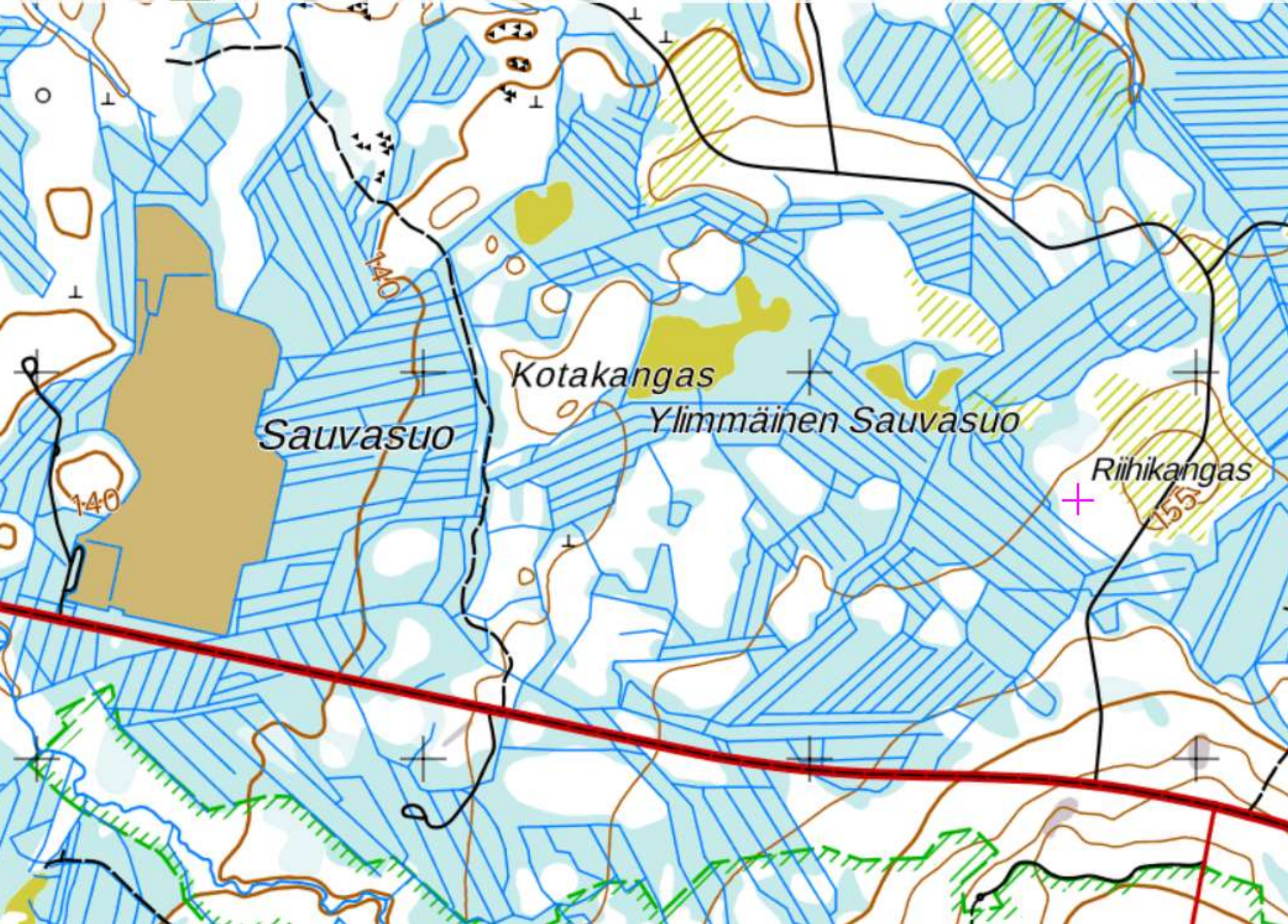
# EO Tree stand level data



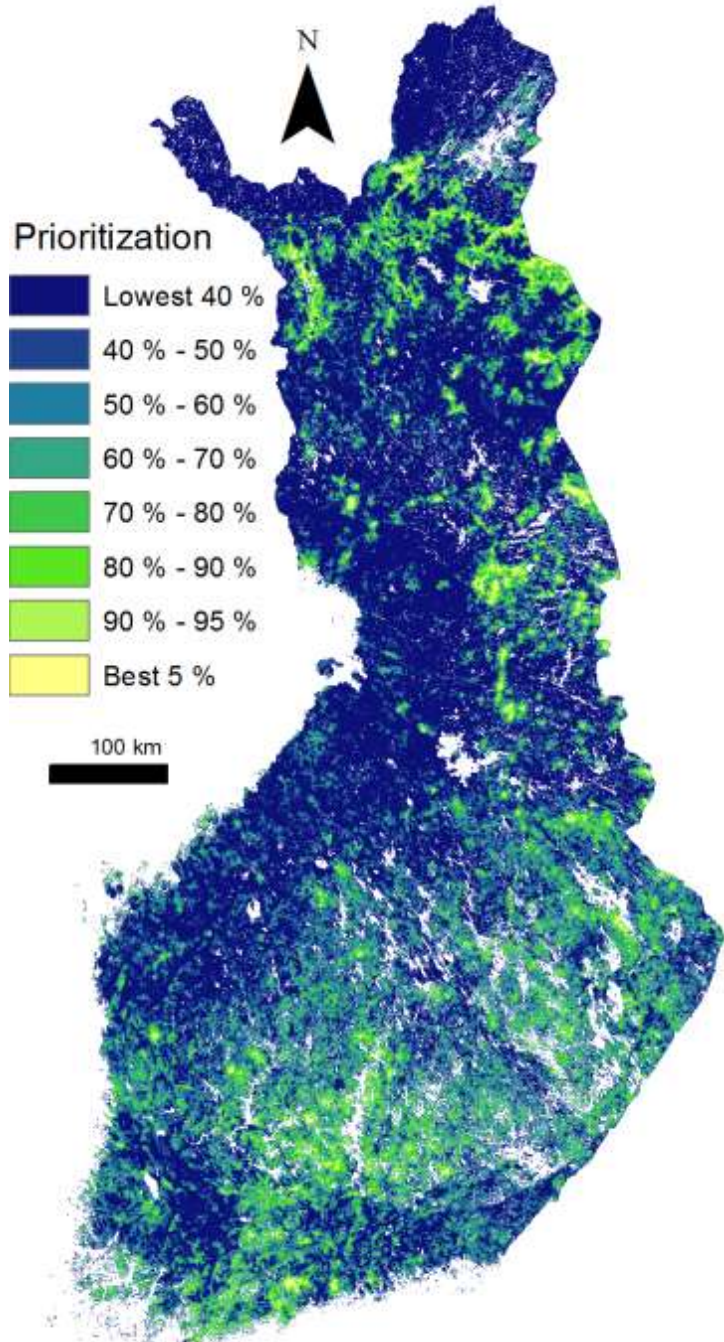


Old version: Air photography –  
Future: Laser scanning?

Ditching / drainage







## Conclusion

1. EO data had very big role in these analysis
2. EO data usually collected for othe purposes than BD conservation – modelling etc. needed.
3. New EO data is needed!
4. Information of forest structure crucial for forest biodiversity reseach



# Thank you for listening!

## Thank you for co-operation and funding!

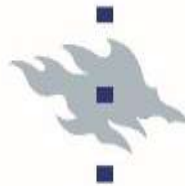


Ympäristöministeriö  
Miljöministeriet  
Ministry of the Environment



mmm.fi

Ministry of Agriculture And Forestry



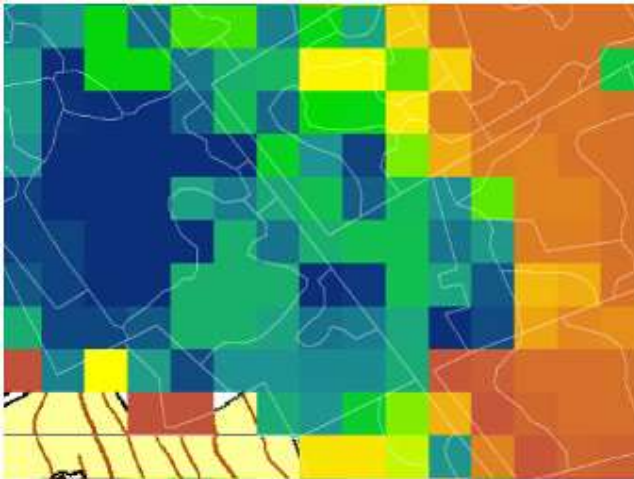
UNIVERSITY OF HELSINKI



S Y K E



METSÄHALLITUS



Ninni Mikkonen

ninni.mikkonen@ymparisto.fi

<http://syke.fi/zonation/en>